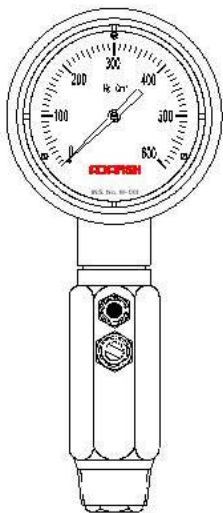


Mud Gauge DM Series



Mud Gauges are used in Oil Industry for slush pump service, portable core drills, for use on gathering lines, etc.

Specifications

- ▶ Ranges 0-60, 100, 160, 250, 400, 600, 1000 kg/cm² or bar
- ▶ Bottom Direct Mounting
- ▶ SS316 Bourdon Tube, SS304 Movement
- ▶ Built in Damper with Fine external adjustment
- ▶ $\pm 1\%$ F.S. Accuracy
- ▶ Sealing Diaphragm: The measuring system is totally sealed from thick fluid by means of long life flexible anti corrosive cup diaphragm
- ▶ Bronze Case, Chromium Plated and Stub Material SS316
- ▶ Gauge Cover Acrylic / Shatterproof
- ▶ Glycerin Filled

How to Inquire:

Send your inquiry with details like

dial size,
pressure range,
Connection,
Mounting,
dry or liquid filled
or any other special requirements you have.